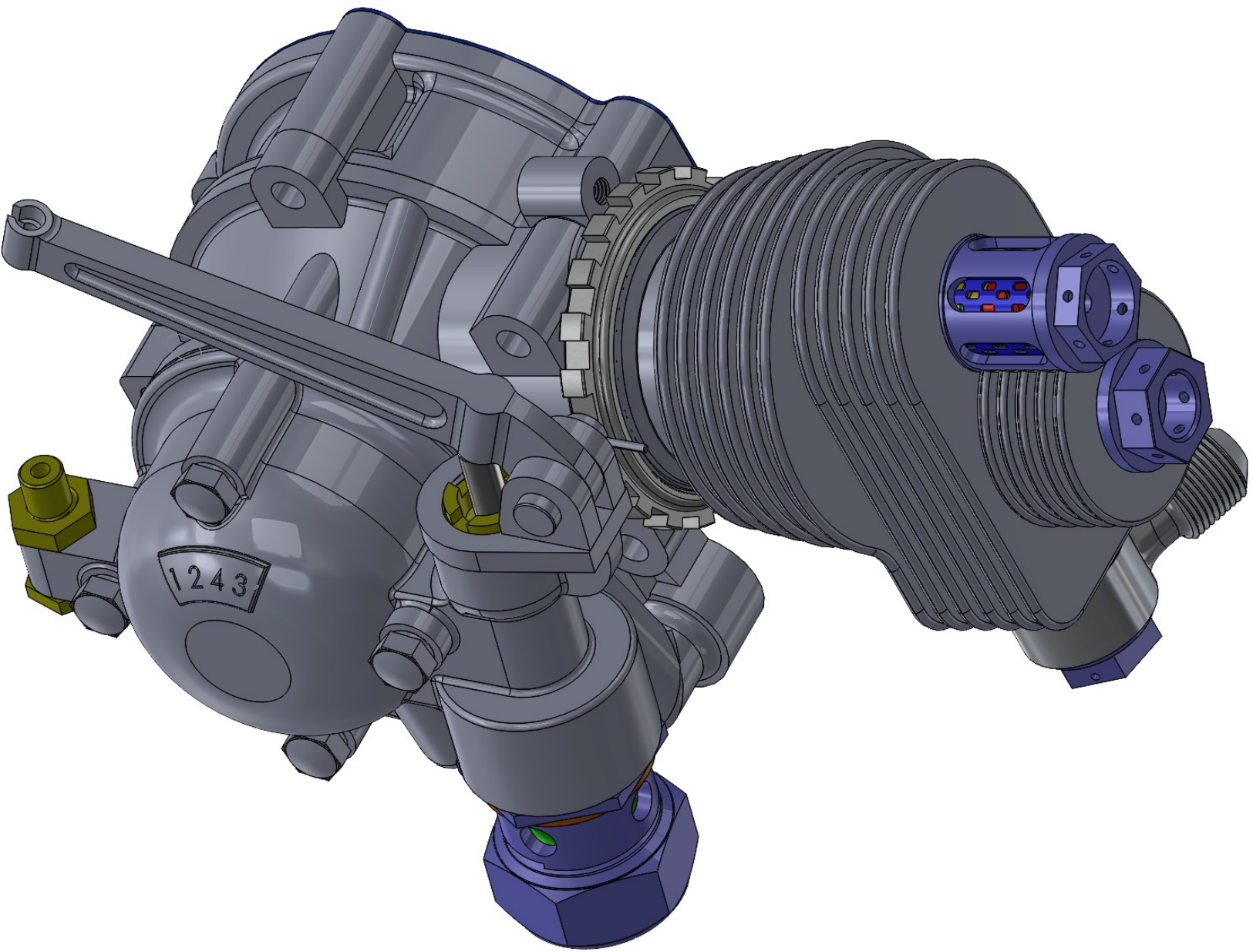
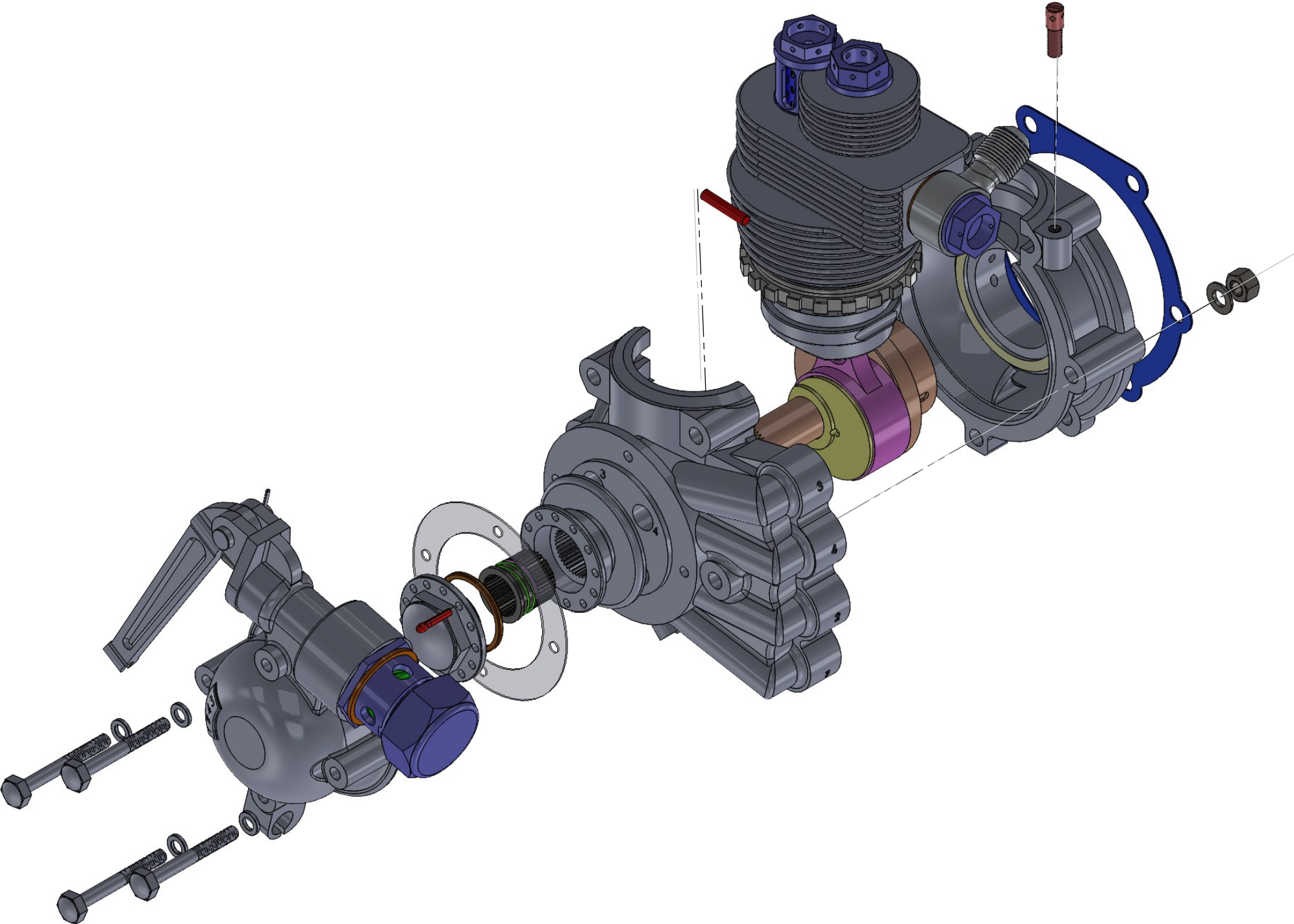


DEMARRREUR COMPRESSEUR VIET

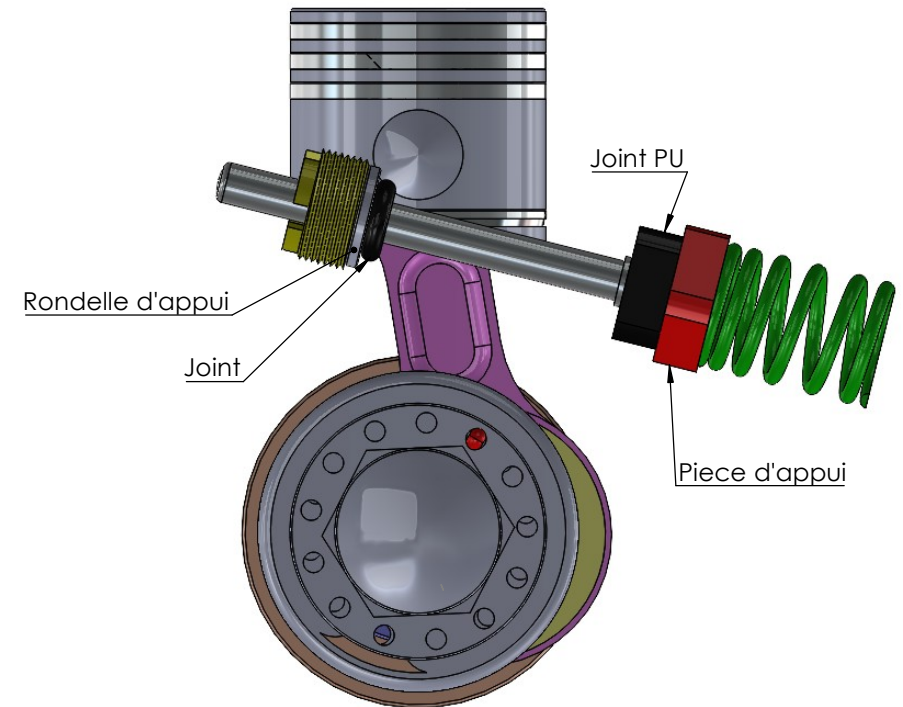
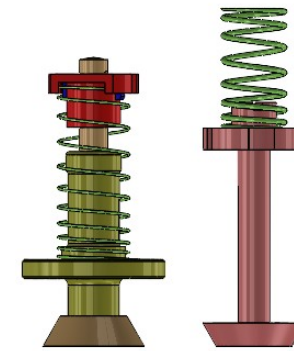
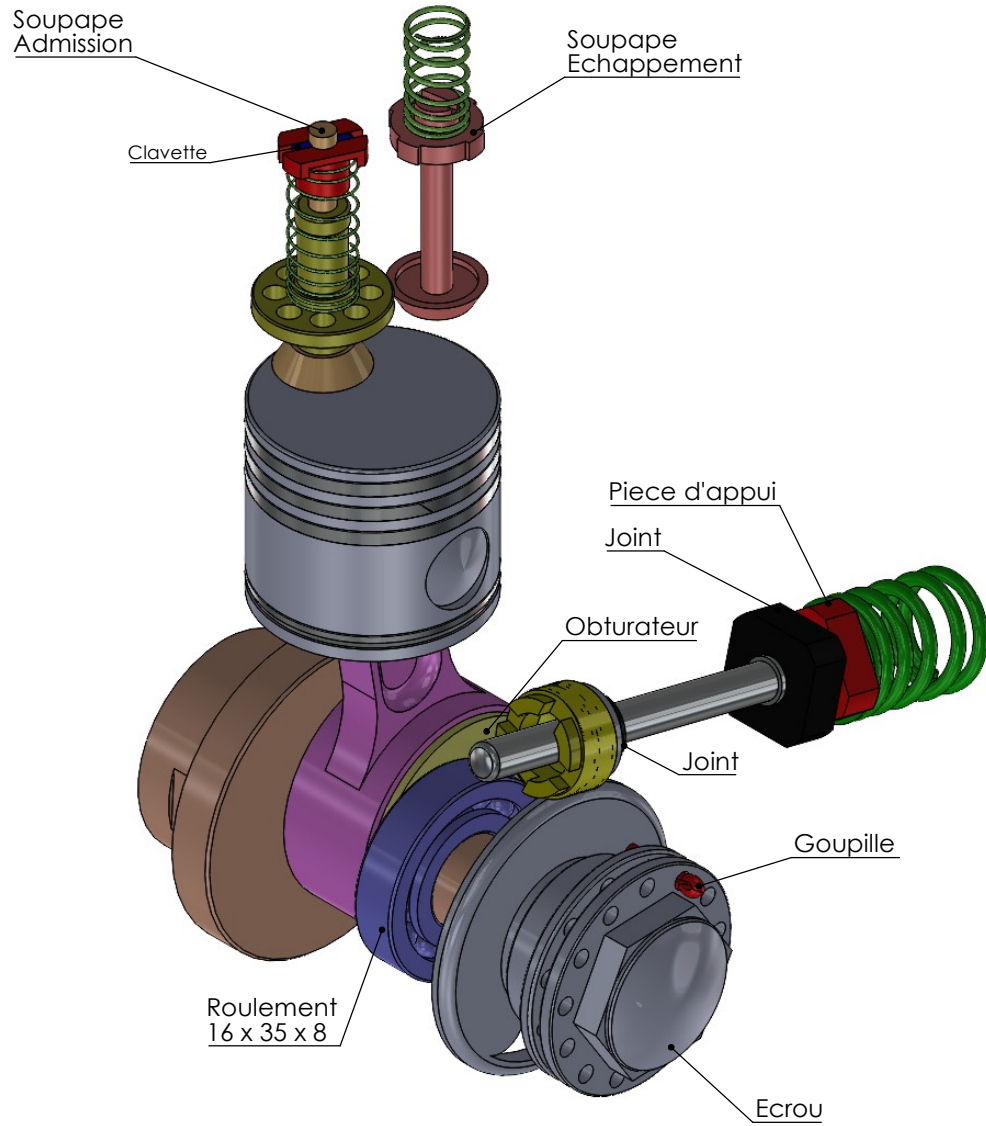
MOTEUR RENAULT 4P



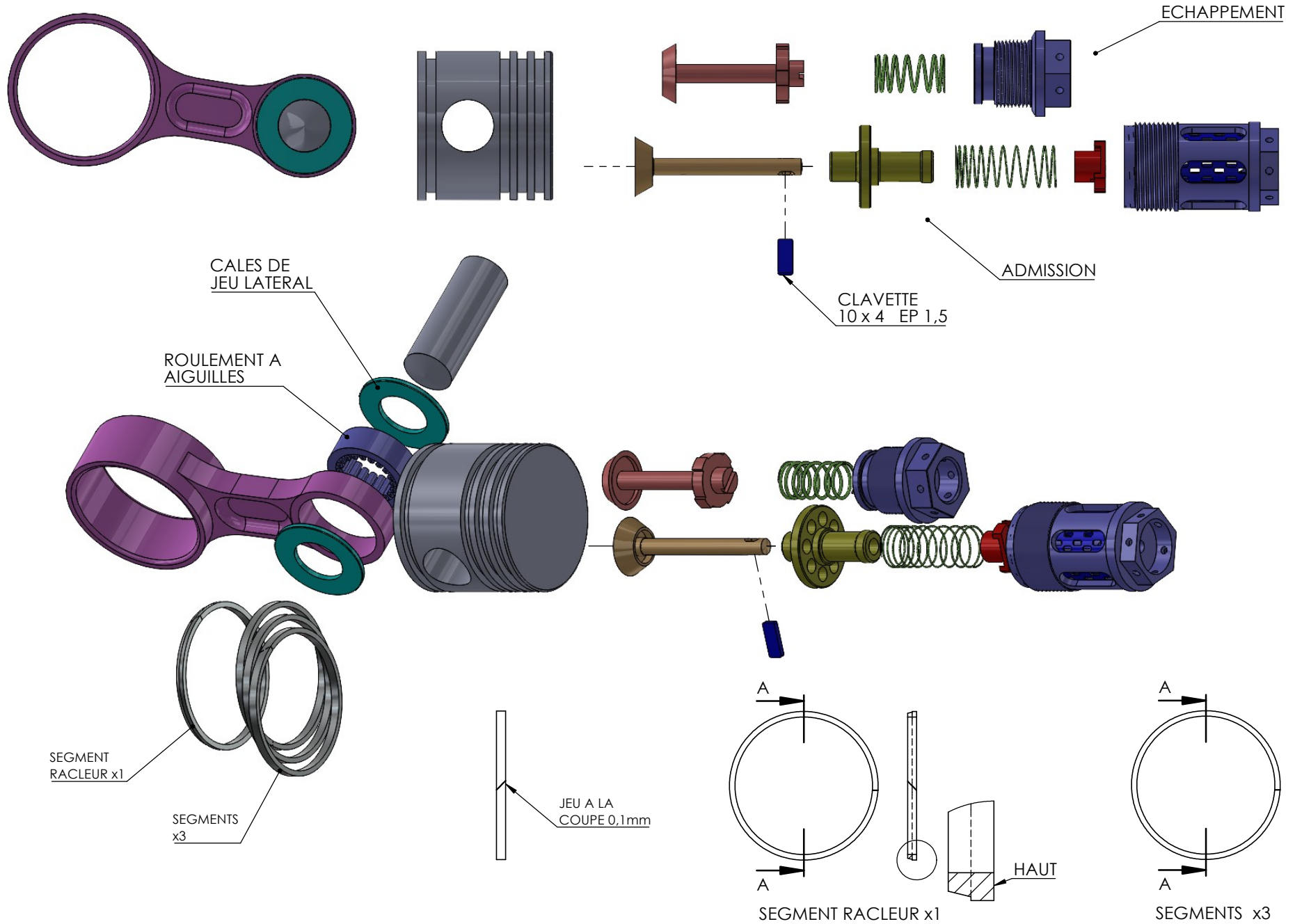
03-2026 #SM

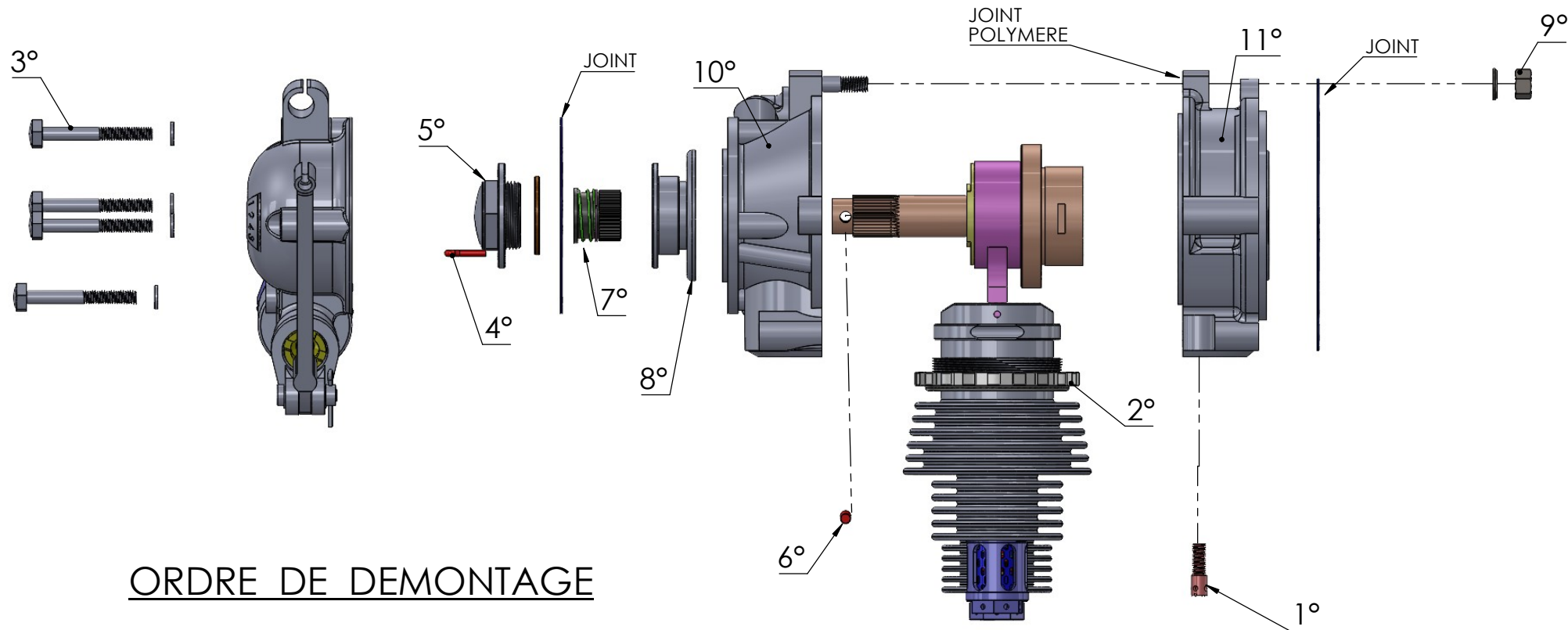
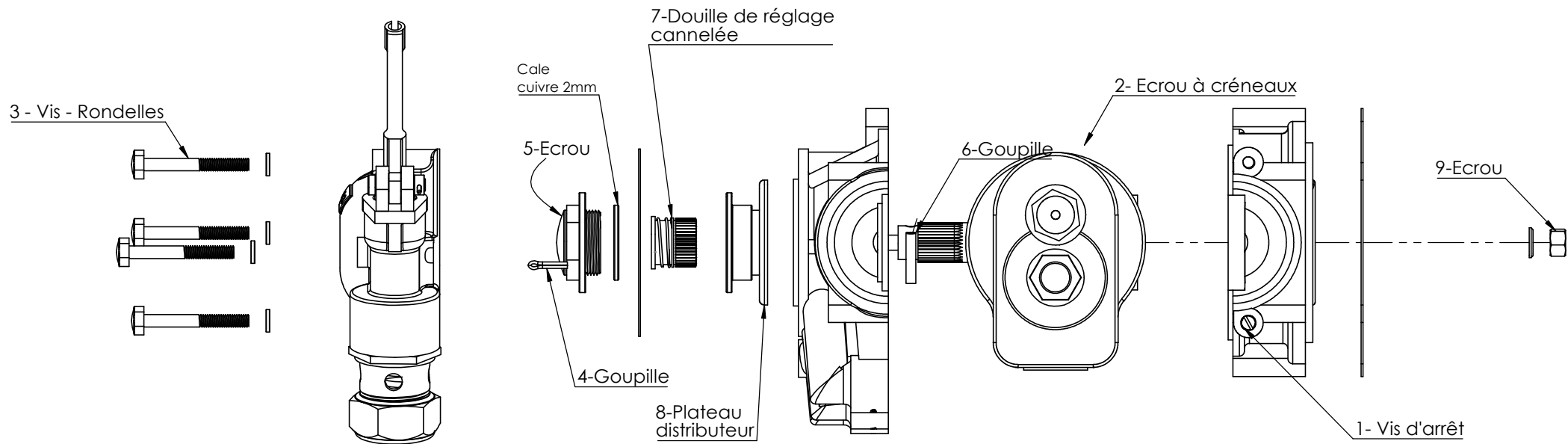


# PIECES MOBILES INTERIEURES

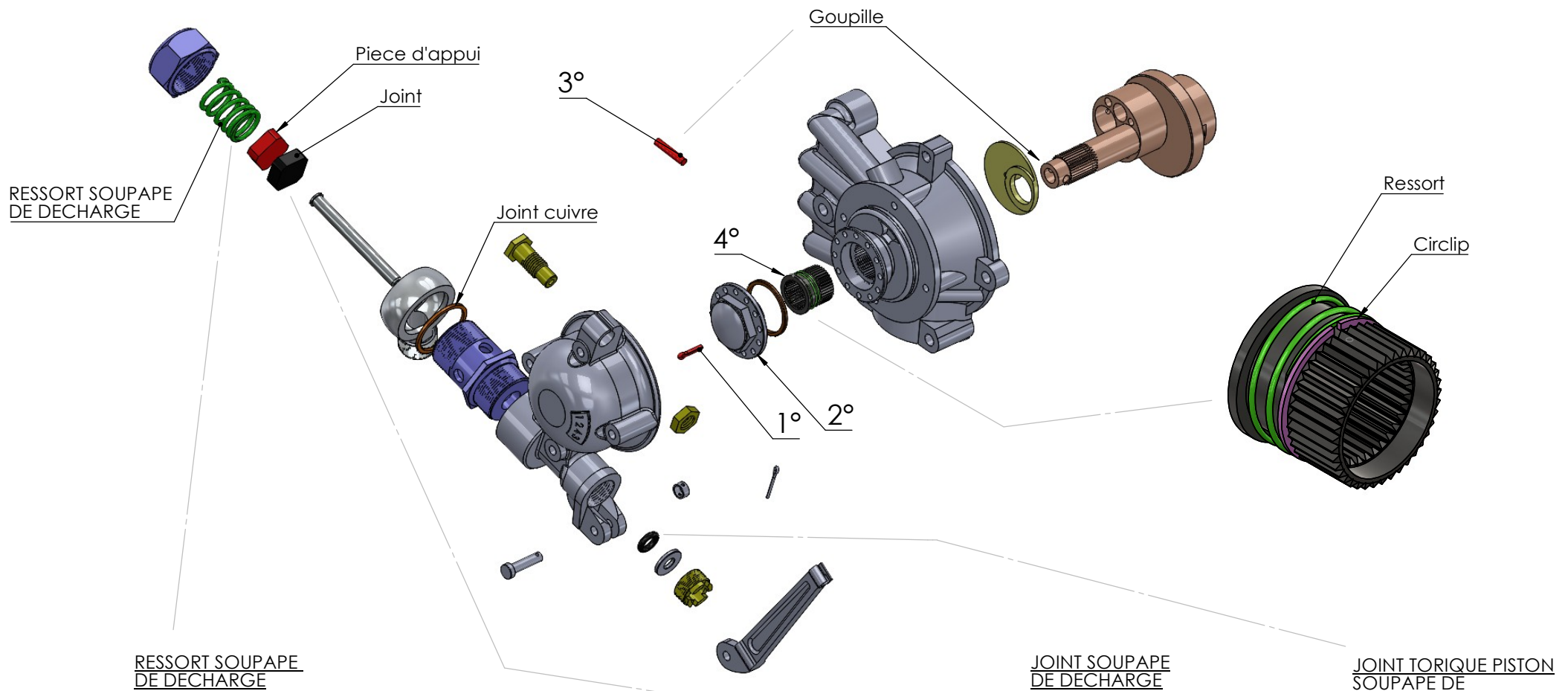


# DETAILS SOUPAPES ADMISSION / ECHAPPEMENT

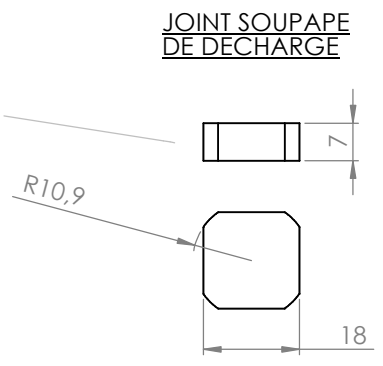




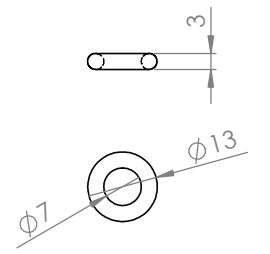
ORDRE DE DEMONTAGE



Hauteur libre : 50mm  
 Diam. de fil : 2,3mm  
 Env. 8,5 spires  
 Pas spires ressort libre: 6mm

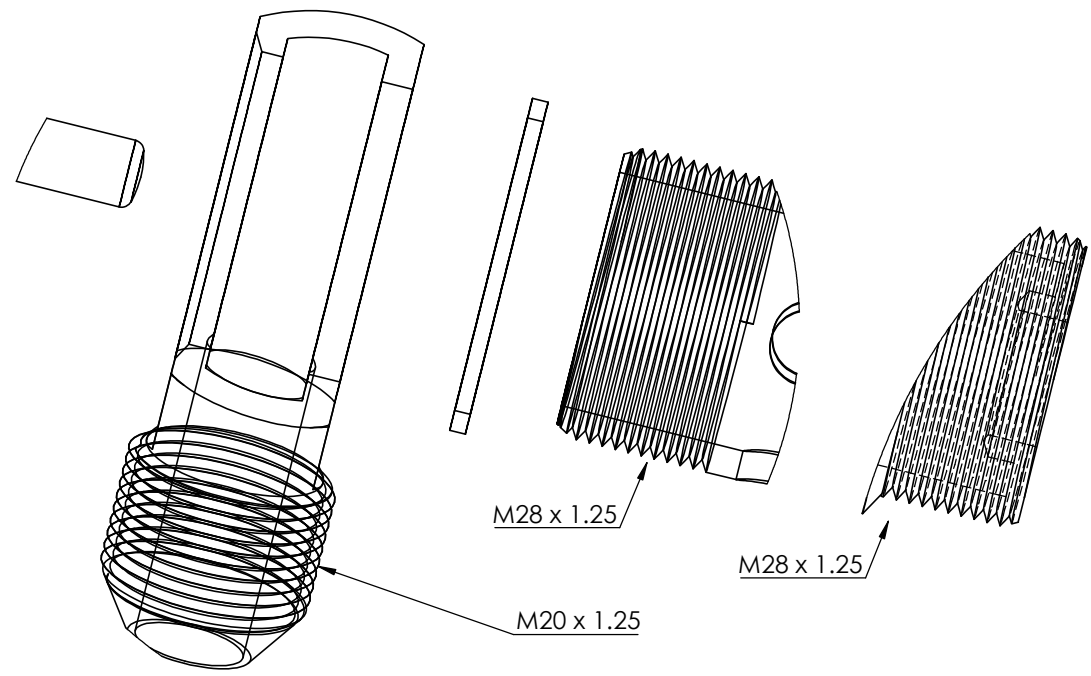
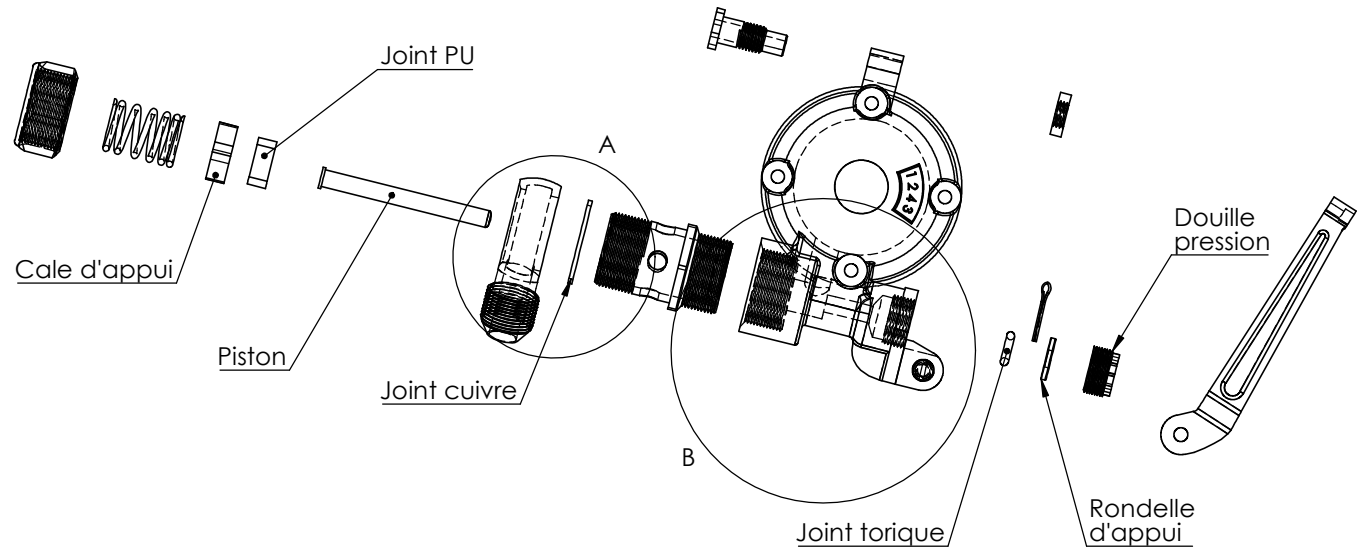


JOINT SOUPAPE DE DECHARGE

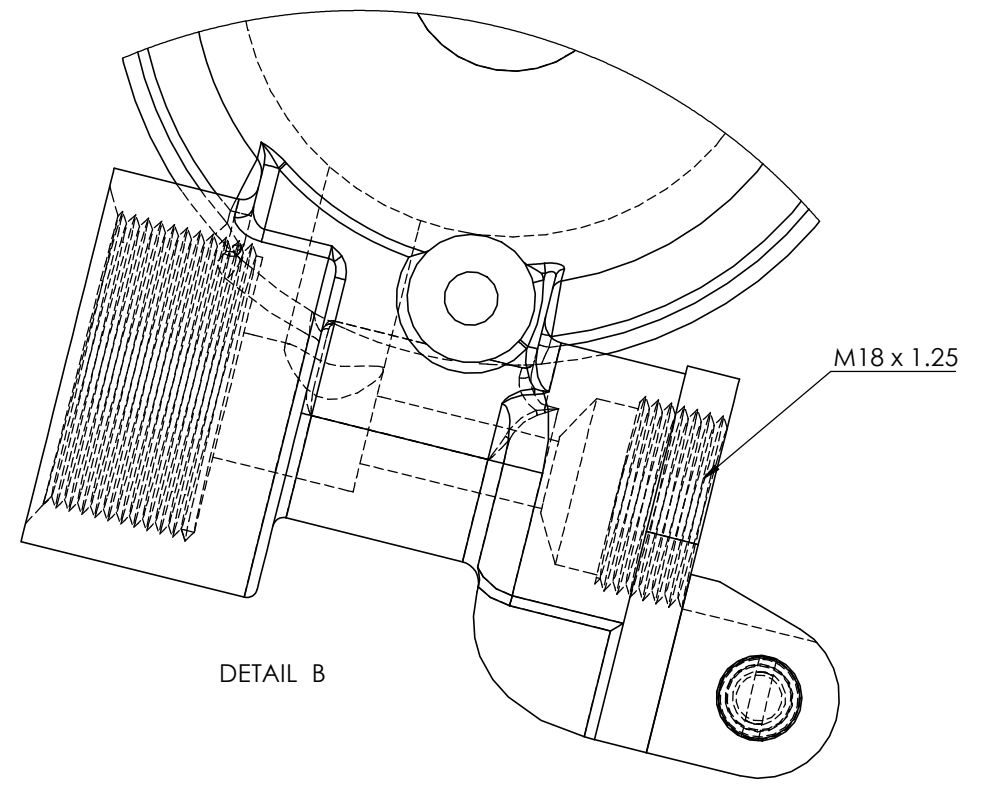


JOINT TORIQUE PISTON SOUPAPE DE DECHARGE

Joint PU 90-95 Shore A

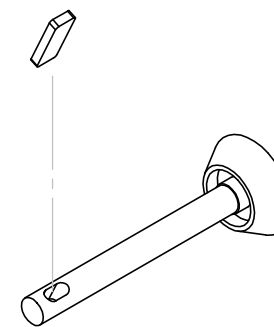


DÉTAIL A



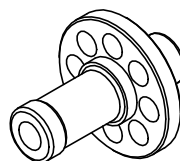
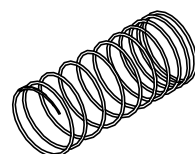
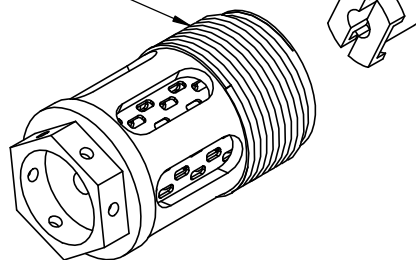
DETAIL B

SOUPAPES

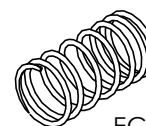
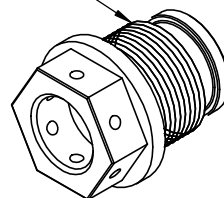


ADMISSION

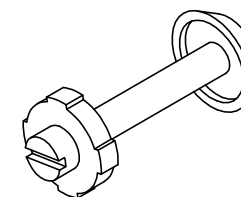
M24x1.25



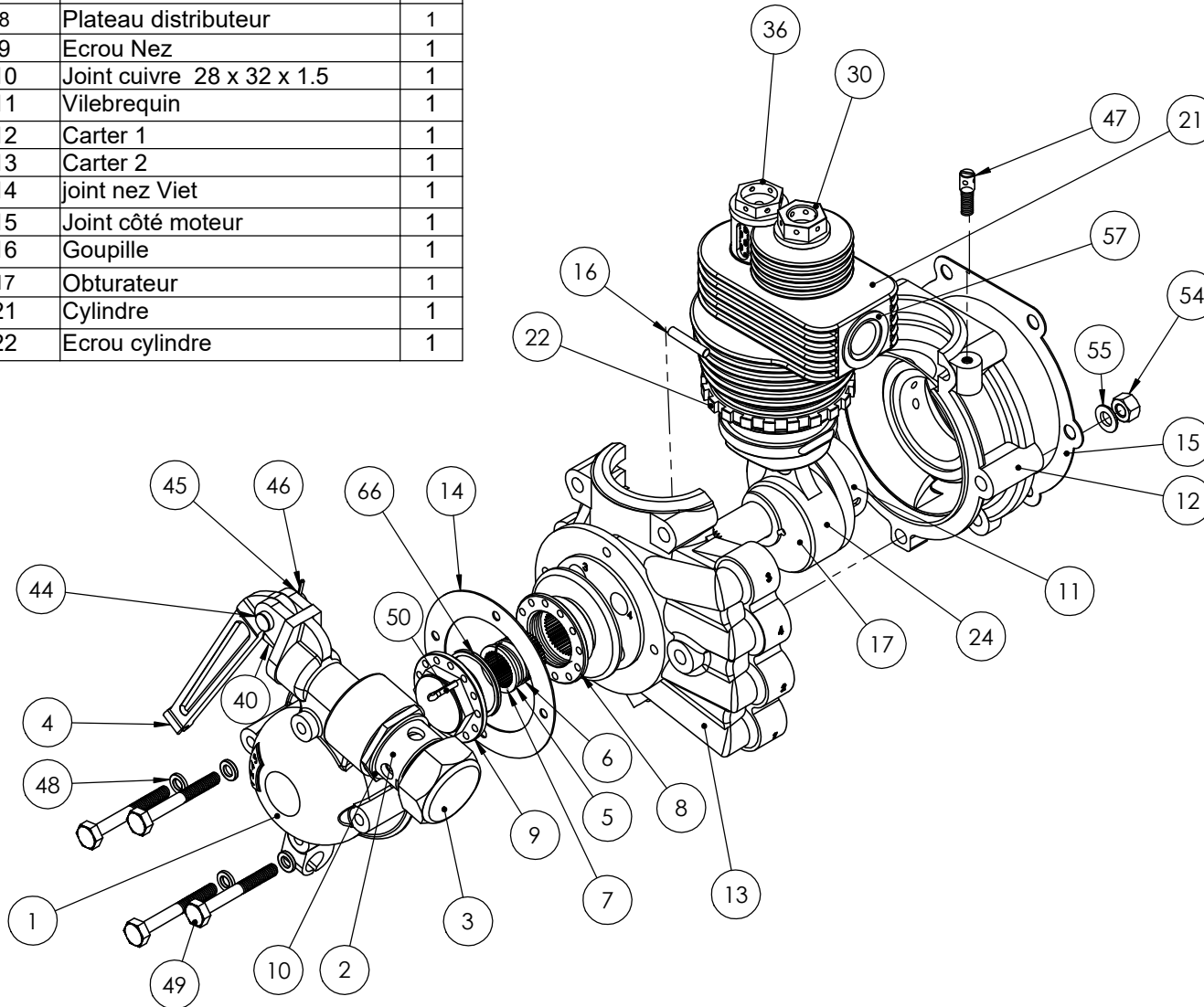
M18x1.25



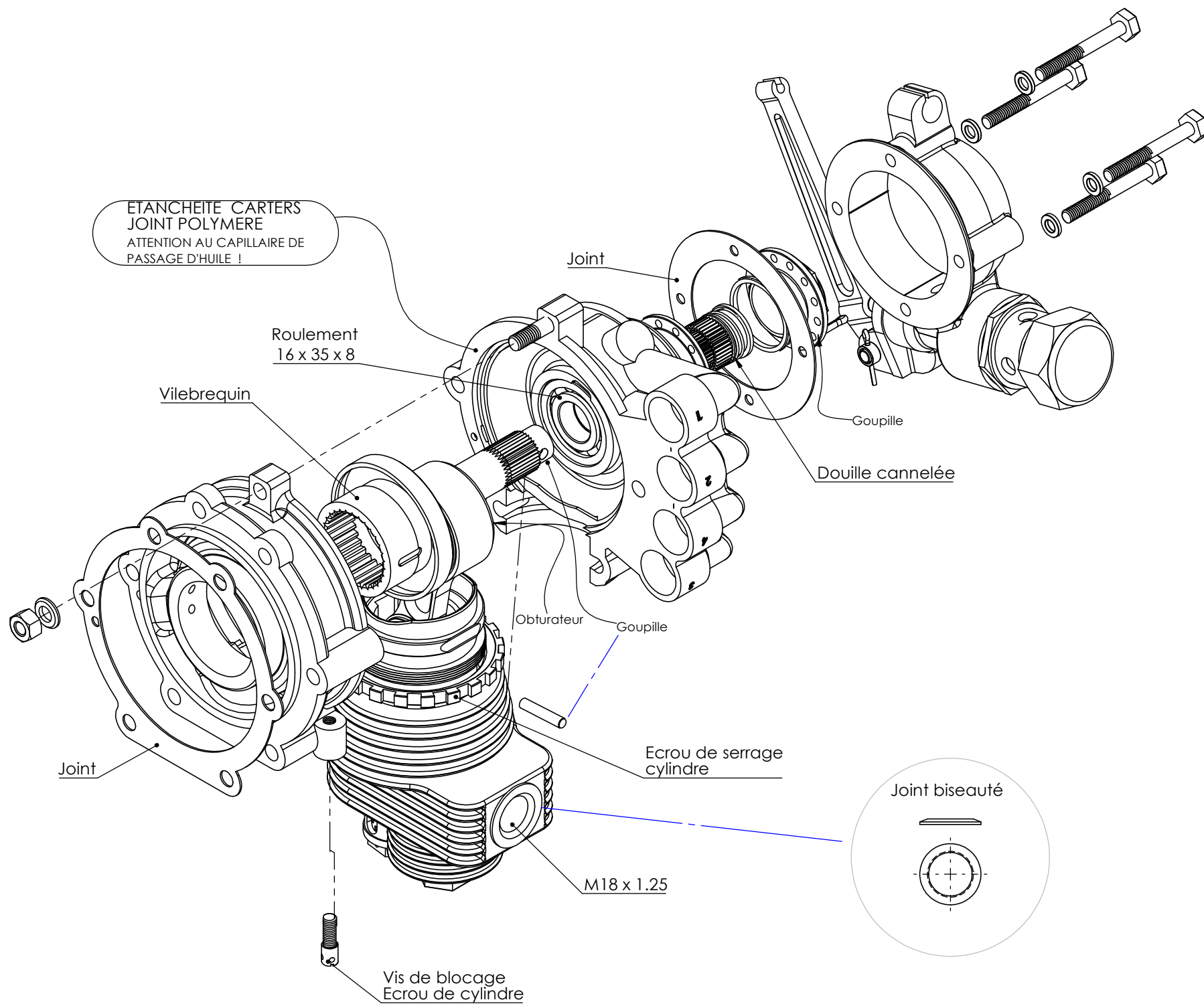
ECHAPPEMENT

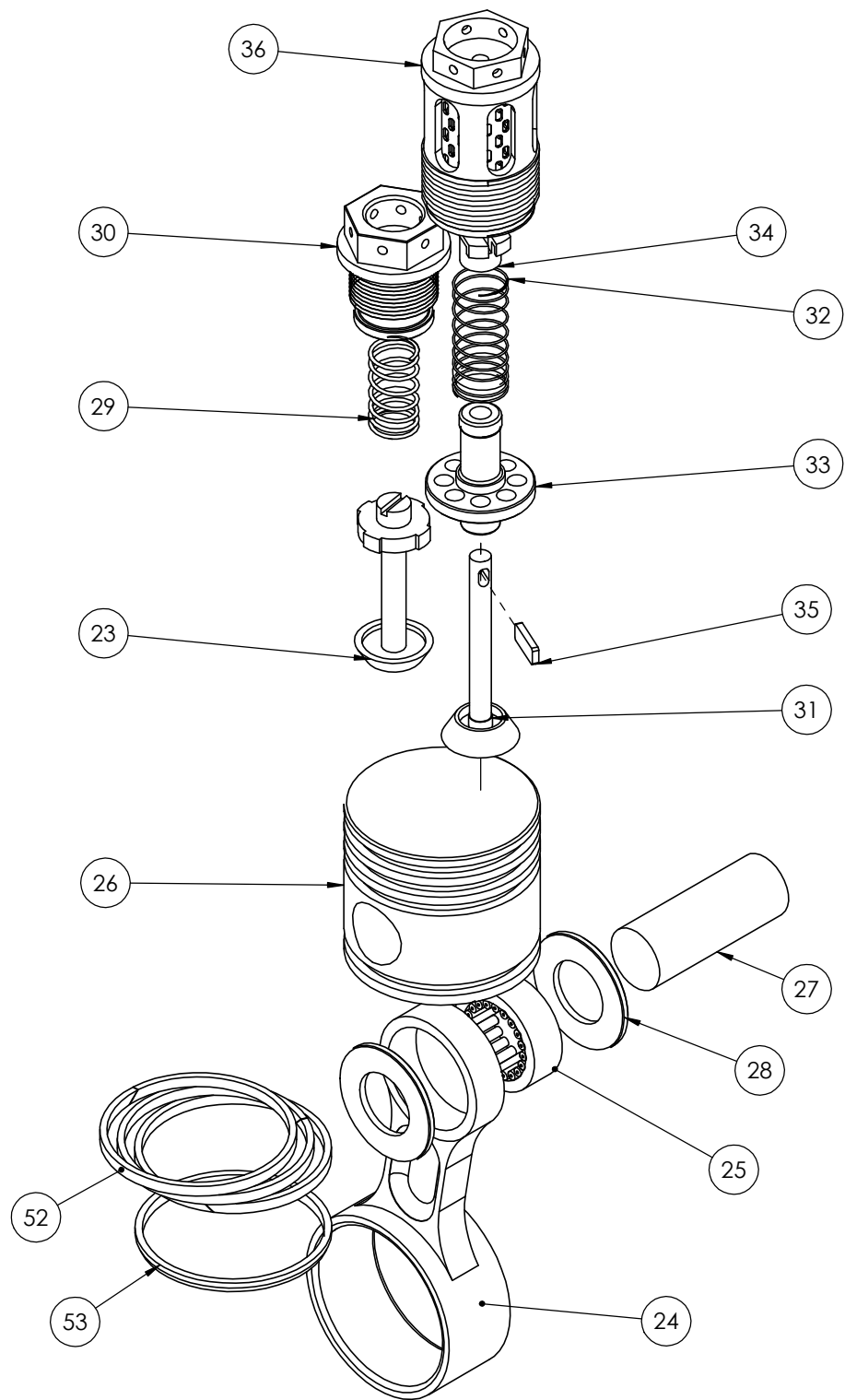


No. ARTICLE	NUMERO DE PIECE	QTE
1	Nez	1
2	Douille Arrivée d'air	
3	Bouchon Banjo	1
4	Levier de commande	1
5	Douille cannelée	1
6	Circlip douille cannelée	1
7	Ressort douille cannelée	1
8	Plateau distributeur	1
9	Ecrou Nez	1
10	Joint cuivre 28 x 32 x 1.5	1
11	Vilebrequin	1
12	Carter 1	1
13	Carter 2	1
14	joint nez Viet	1
15	Joint côté moteur	1
16	Goupille	1
17	Obturbateur	1
21	Cylindre	1
22	Ecrou cylindre	1



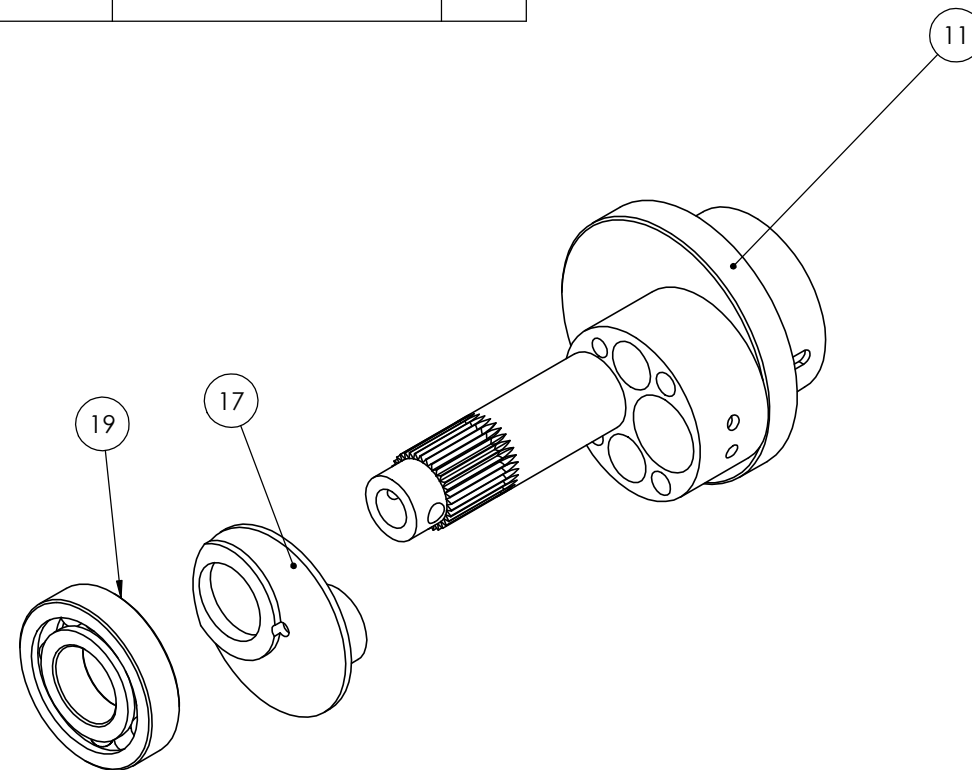
No. ARTICLE	NUMERO DE PIECE	QTE
24	Bielle	1
30	Bouchon Echappement	1
36	Bouchon Admission	1
40	Axe soupape decharge	1
44	Axe levier de commande	1
45	Bague axe levier de commande	1
46	Goupille 1,5	1
47	Vis de blocage	1
48	Rondelle M5	4
49	vis M5x40 filetage partiel	4
50	Goupille 2,5	1
54	Ecrou M6	1
55	Rondelle M6	1
57	Joint cuivre bisauté 18x26x2.5	1
60	Pièce1^Assemblage1	1
61	Pièce2^Assemblage1	1
62	Pièce3^Assemblage1	1
63	Pièce4^Assemblage1	1
64	Arrêt de câble	1
65	Arrêt de câble Ecrou	1
66	Cale joint cuivre 26 x 30 x 2	1





No. ARTICLE	NUMERO DE PIECE	QTE
11	Vilebrequin	1
17	Obturateur	1
19	Roulement 16x35x8	1
23	Soupape Echappement	1
24	Bielle	1
25	Cage a aiguilles 14x23x8	1
26	Piston	1
27	Axe piston	1
28	Cale axe piston	2
29	Ressort Echappement	1
30	Bouchon Echappement	1
31	Soupape Admission	1

No. ARTICLE	NUMERO DE PIECE	QTE
32	Ressort Admission	1
33	Douille calibrée admisson	1
34	Verrou ressort admission	1
35	Clavette 10 x 4 ep.1,5	1
36	Bouchon Admission	1
52	Segment 1 2 et 3	3
53	Segment racleur	1
64	Arrêt de câble	1
65	Arrêt de câble Ecrou	1
66	Cale joint cuivre	1



# CALAGE DEMARREUR

(LE DEMARREUR ETANT MONTE SUR LE MOTEUR)

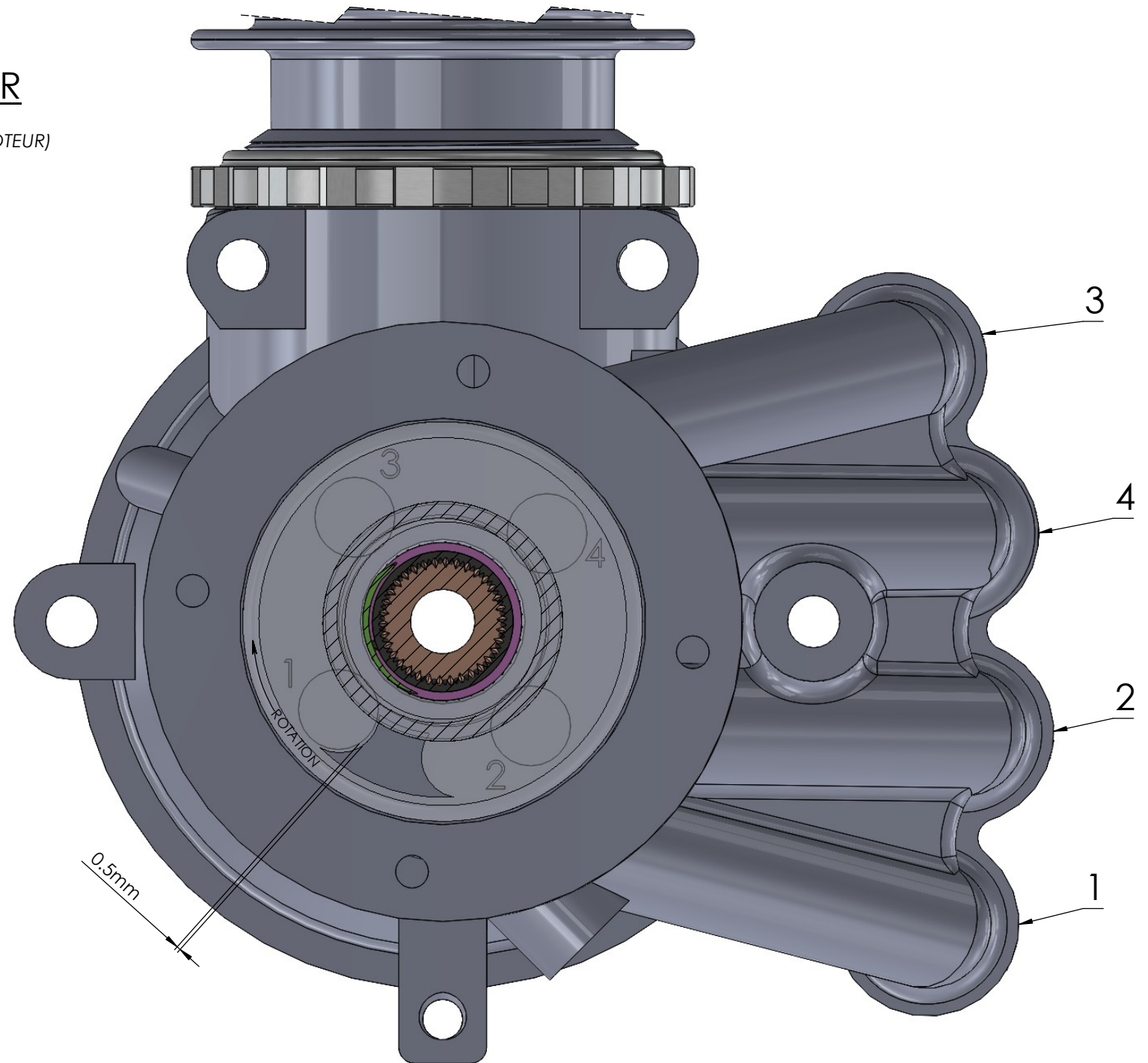
POSITIONNER LE CYL.1 AU P.M.H TEL QUE LES SOUPAPES DU CYL.4 SOIENT EN BASCULE (LES SOUPAPES DU CYL.1 NE DOIVENT PAS ETRE EN BASCULE)

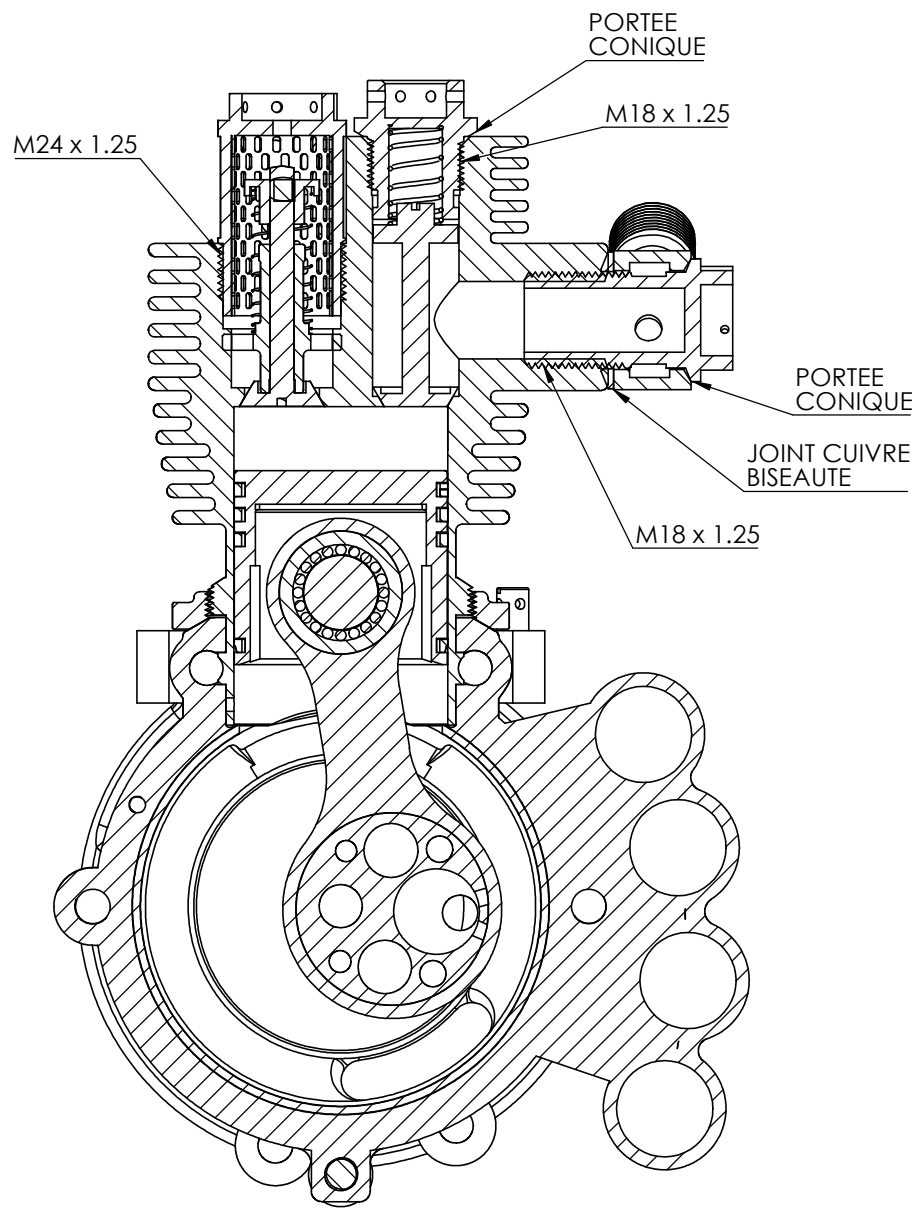
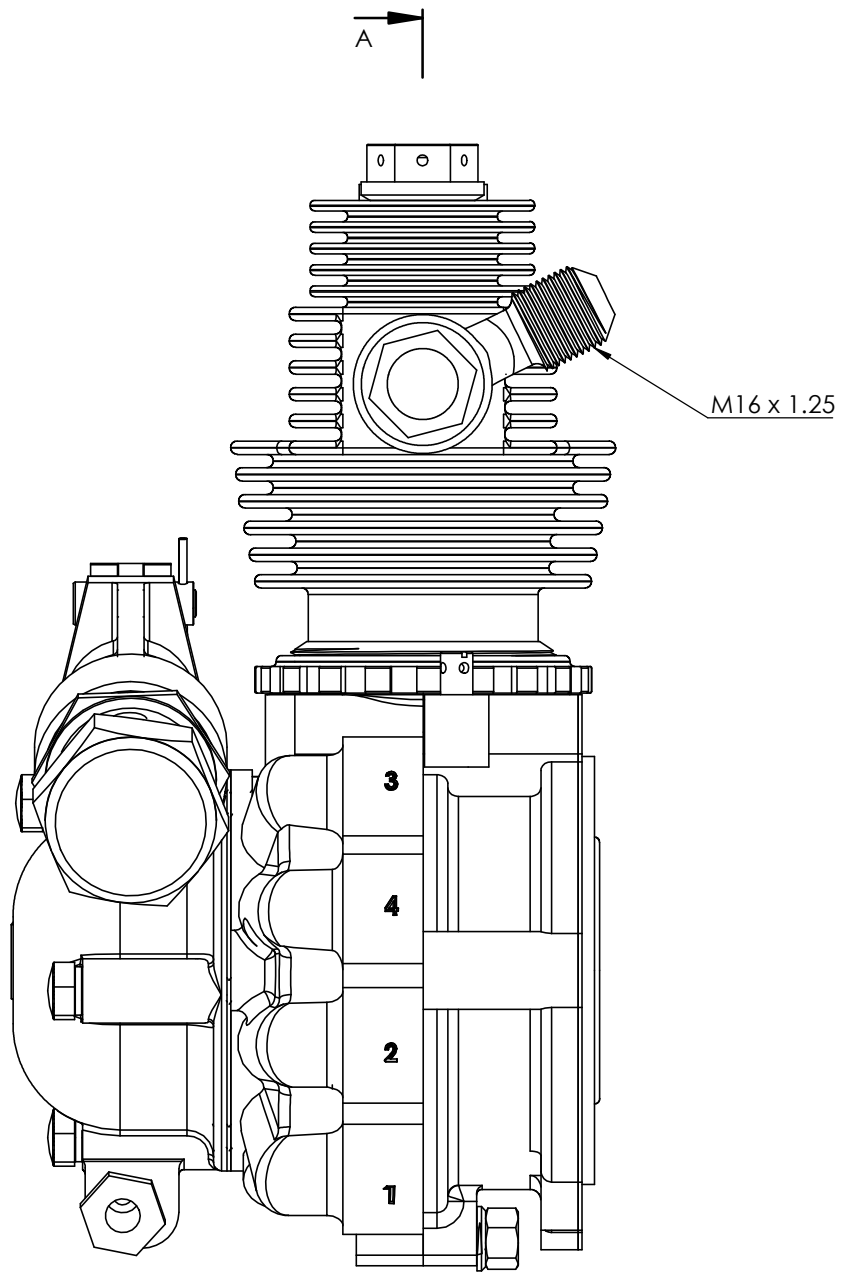
SI CE N'EST PAS LE CAS, FAIRE 1 TOUR DE VILEBREQUIN ET REVENIR AU P.M.H

DEPOSER LE NEZ N°1, LA GOUPILLE N°50, L'ECROU N° 9, ET LA GOUPILLE N° 16

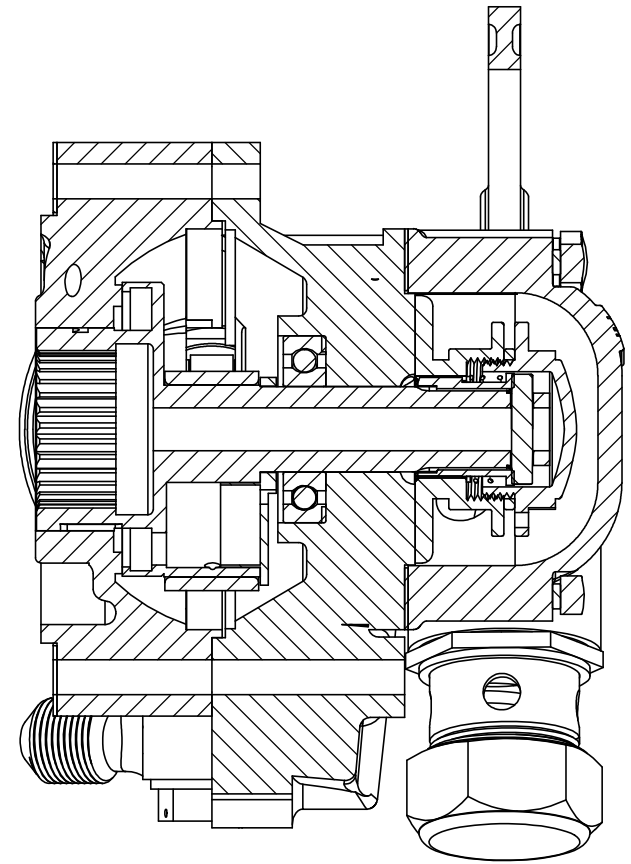
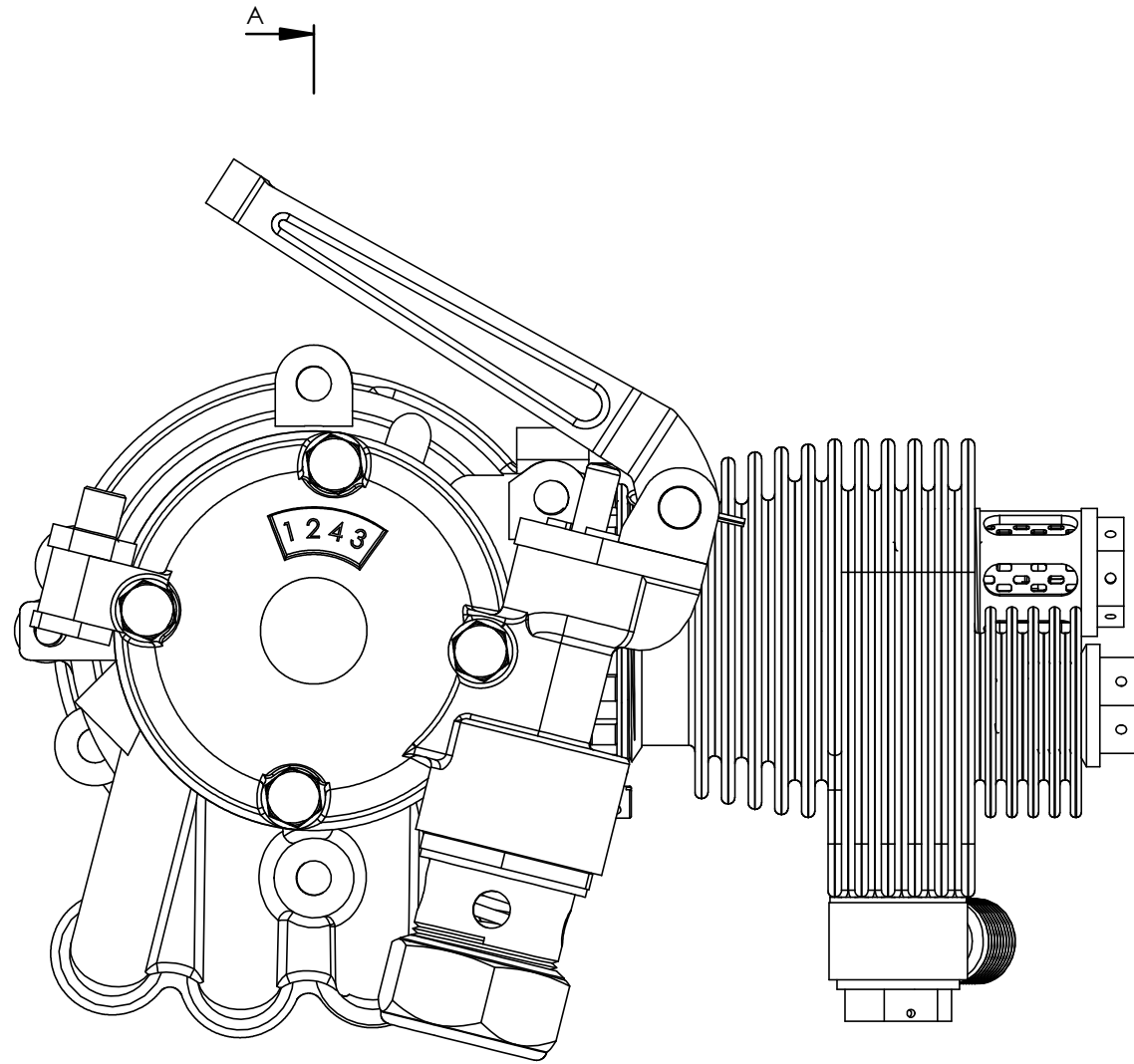
POSITIONNER, AU MOYEN DE LA DOUILLE CANNELEE, LA LUMIERE DU PLATEAU DISTRIBUTEUR 0,5MM AVANT LA LUMIERE DU CYL.1 SE TROUVANT DERRIERE.

REMONTER L'ENSEMBLE.





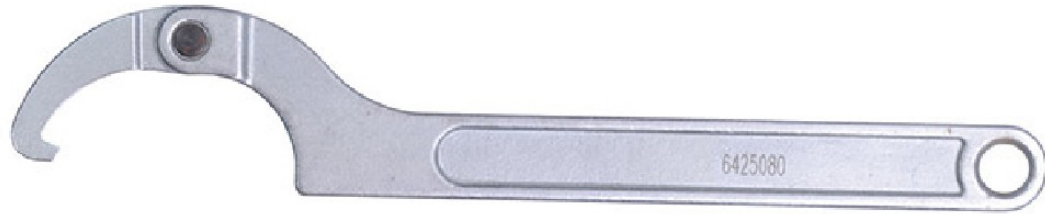
COUPE A - A



COUPE A-A

## OUTILS POUR DEMONTAGE

CLE A ERGOT



EXTRACTEUR  
DE ROULEMENT  
(Cage intérieure)

